

## Small - sized hydraulic - pneumatic pump PGM



### *Intended use*

Generating of gauge pressure and vacuum for calibrating measuring instruments in the field and in laboratory conditions.

### *Highlights*

Pressure generating range is from -0.09 to 60 MPa.

Much lower weight as compared to analogues (4.8 kg).

Convenient and easy mounting both in stationary position (on table) and in the field conditions (on pipe, guarding).

Working medium diversity: oil, water, air.

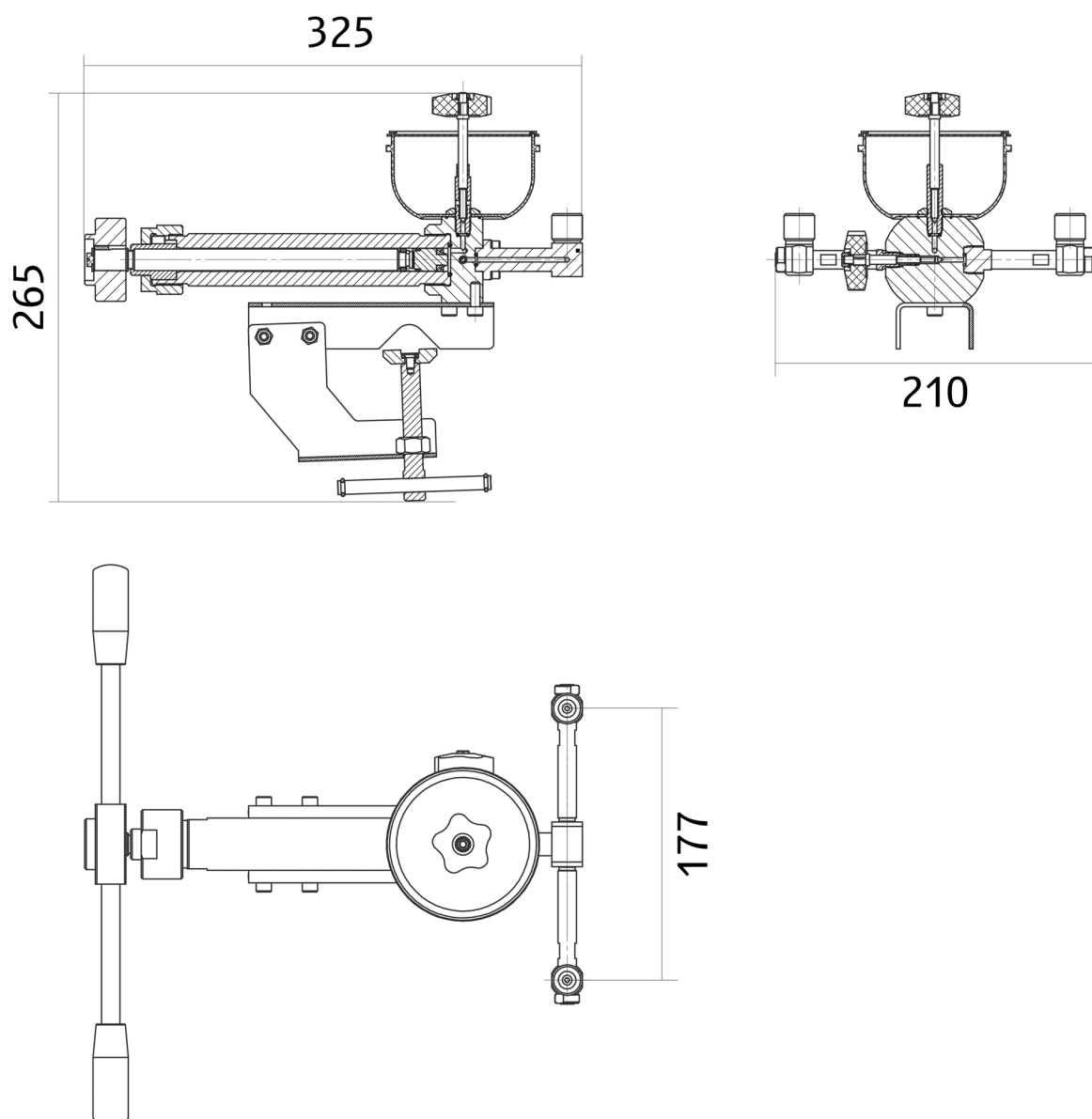
Leak-tight bowl for working medium enables transportation in filled and ready-to-operation condition.

The standard supply includes a set of connecting nuts for easy installation of devices on test, a set of modern seals that allow tightening without using wrenches (by hand) on pressures up to 60 MPa, repair kit.

## Main technical and operational characteristics

|   | PGM             |
|---|-----------------|
| Pressure generation range, MPa                                    | -0.09...60      |
| Number of places for pressure measuring instruments on test, pcs. | 1               |
| Weight of the device, kg  | 4.8             |
| Volume of the bowl for the working medium, ml                     | 200             |
| Volume of cylinder, cm <sup>3</sup>                               | 26              |
| Working medium  | water, oil, air |

## Overall dimensions



**Digital reference pressure gauges DM5002M-A-AP (battery powered)**

As compared with pointer reference pressure gauges the advantage of pressure gauges DM5002M-A-AP is:

- multi-range feature: each digital pressure gauge DM5002M-A-AP features several switchable measurement sub-ranges with assuring the same accuracy class in each sub-range. *Due to this feature one pressure gauge DM5002M-A can replace four pointer reference pressure gauges;*
- switching between different units of measurement: MPa, kgf/cm<sup>2</sup>, one more — optional: psi, mm Hg, etc.;
- high accuracy class: 0.25; 0.15; 0.1 & 0.06.



The most commonly used instrumentation for PGM includes three digital pressure gauges DM5002M-A of accuracy class 0.1 and upper measurement limit:

- 60 MPa (measurement sub-ranges 0...60 MPa, 0...40 MPa, 0...25 MPa and 0...16 MPa);
- 16 MPa (measurement sub-ranges 0...10 MPa, 0...6 MPa, 0...4 MPa and 0...2.5 MPa);
- -0.1...2.4 MPa (measurement sub-ranges -0.1...2.4 MPa, -0.1...1.5 MPa, -0.1...0.9 MPa and -0.1...0.5 MPa).

This set allows calibrating most types of popular pressure gauges: with measurement range from -0.1 MPa (-1 kgf/cm<sup>2</sup>) to 60 MPa (600 kgf/cm<sup>2</sup>) and accuracy class 0.4 and lower..

## Certification

Test pressure devices are not subject to mandatory certification.

## Package

**Standard package:**

- basement with pressure generator;
- set of fittings for connection of measuring devices on test with threads M20\*1.5 (2 pcs.); M12\*1.5 (1 pcs.); G1/2 (1 pcs.); G1/4 (1 pcs.).
- set of rubber-metal sealing rings;
- spare tools and accessories kit;
- passport.

**Options:**

- reference pressure gauges;
- case for storage and carrying;
- fittings for connection of measuring devices on test with device-specific threads.

# Alfapascal

**Alfapascal Limited Liability Company**  
 454047 Russia, Chelyabinsk,  
 2 - ia Paveletskaya, 36  
 + 7 (351) 725 74 50,  
 725 74 49.  
[info@alfapascal.ru](mailto:info@alfapascal.ru)